

abbotFox

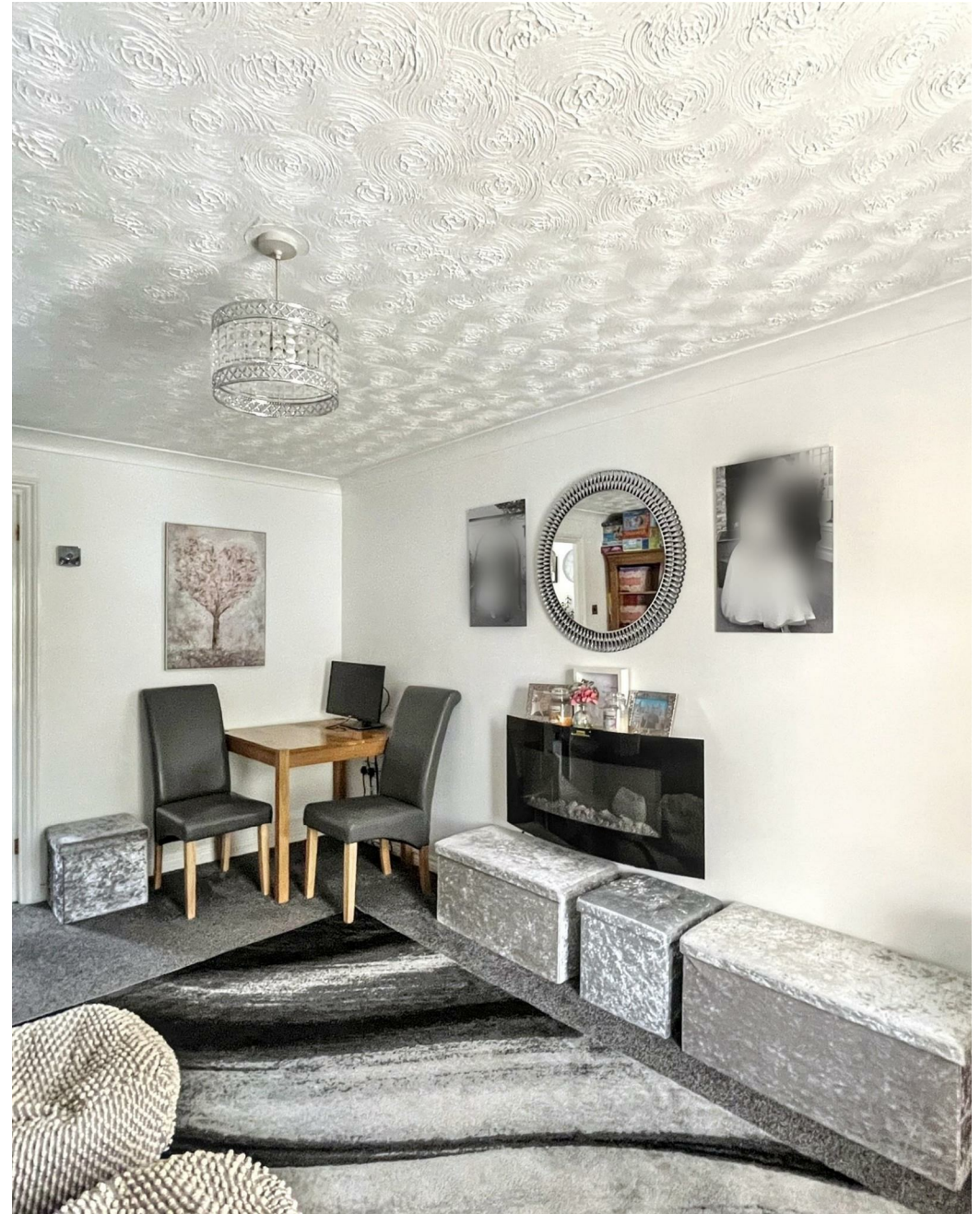


Norwich. NR7
£215,000

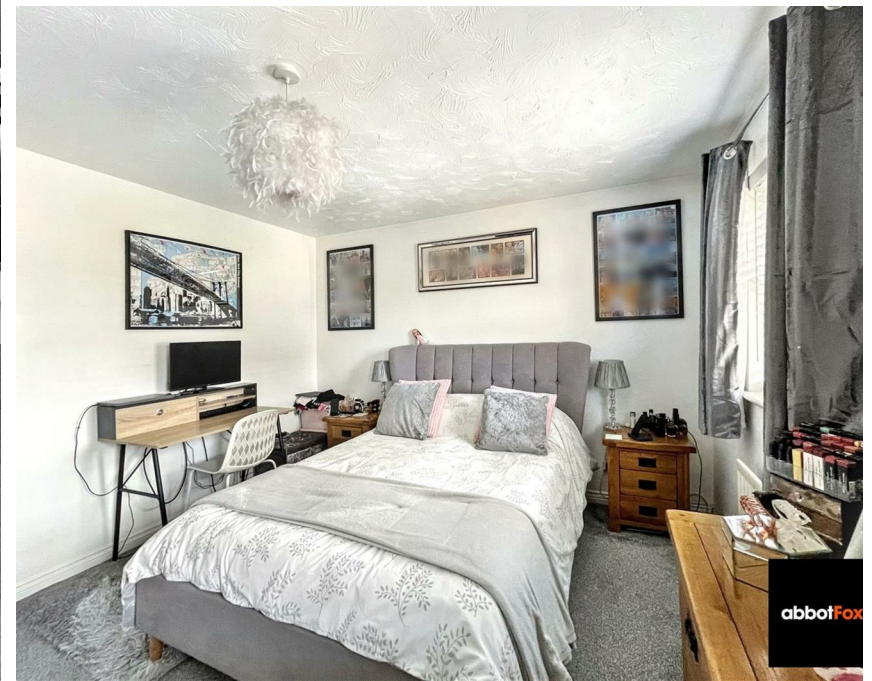
“

We are a team of genuine individuals who hold a deep passion for both property and marketing. Collectively, we bring over 70 years of experience in the property market of Norfolk and Suffolk. Our affection for both counties runs deep, and we are enthusiastic about sharing our passion with you.

Colin McKenzie | **Branch Partner**







THE DETAIL _____

abbotFox presents this two bedroom mid-terraced home, tucked away within a quiet cul-de-sac in the ever-popular Dussindale development.

This well-presented home offers a spacious lounge, modern kitchen that opens onto a private rear garden. Upstairs, two double bedrooms are served by a family bathroom.

Outside, the property benefits from an enclosed garden, along with the added advantage of a garage and off-road parking.

An ideal opportunity for first-time buyers, this home enjoys a sought-after position within easy reach of local amenities, schools and excellent transport links into Norwich city centre and beyond.



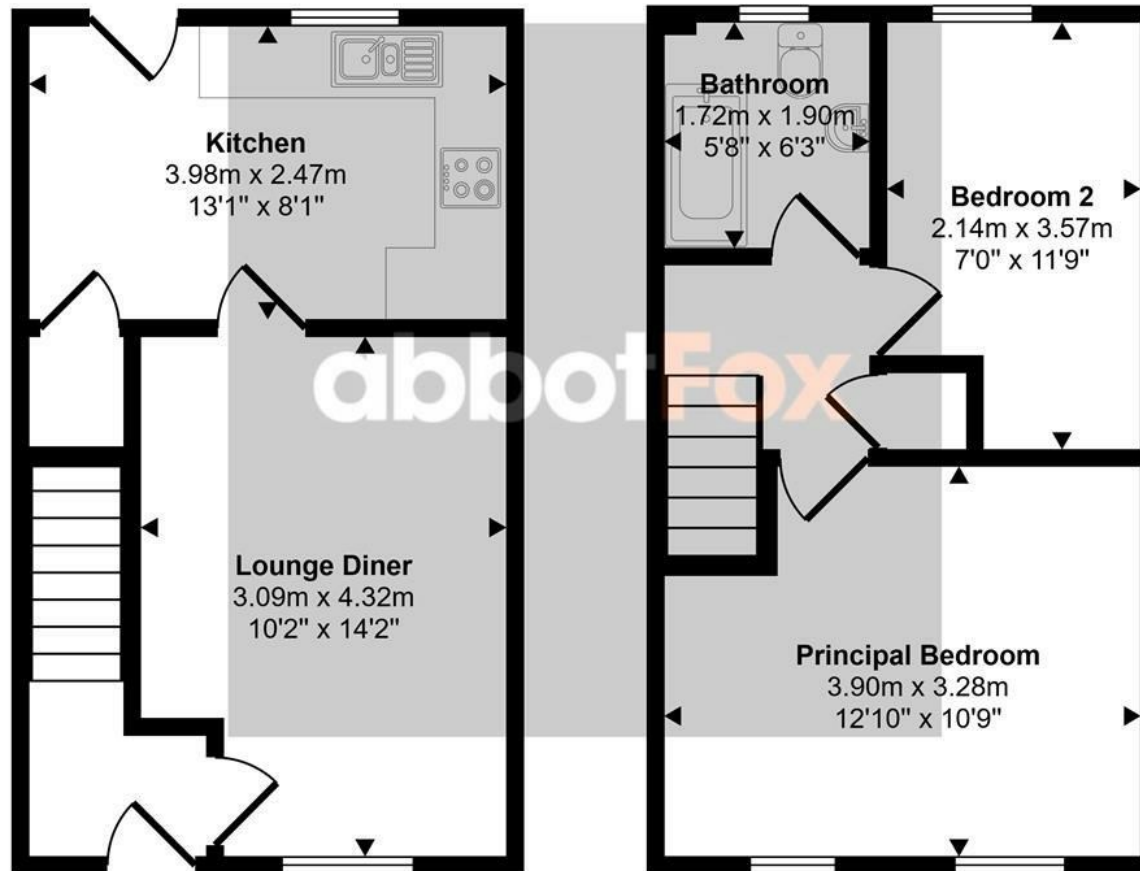




THE HIGHLIGHTS _____

- Mid terraced house
- Two bedrooms
- Generous living accommodation
- Off road parking and garage
- Ideal first time buy
- Viewing advised

Approx Gross Internal Area
55 sq m / 597 sq ft



Ground Floor
Approx 28 sq m / 300 sq ft

First Floor
Approx 28 sq m / 297 sq ft

This floorplan is only for illustrative purposes and is not to scale. Measurements of rooms, doors, windows, and any items are approximate and no responsibility is taken for any error, omission or mis-statement. Icons of items such as bathroom suites are representations only and may not look like the real items. Made with Made Snappy 360.

Let's talk

01603 660000

sales@abbotfox.co.uk

@abbotfox

EPC RATING -

Disclaimer – In accordance with the Property Misdescriptions Act, the company abbotFox gives notice that all descriptions, references to condition, necessary permissions for use and other details are given in good faith and believed to be correct, but any purchaser should not rely on them as statements of fact, and must satisfy themselves by inspection or other means, as to their accuracy.